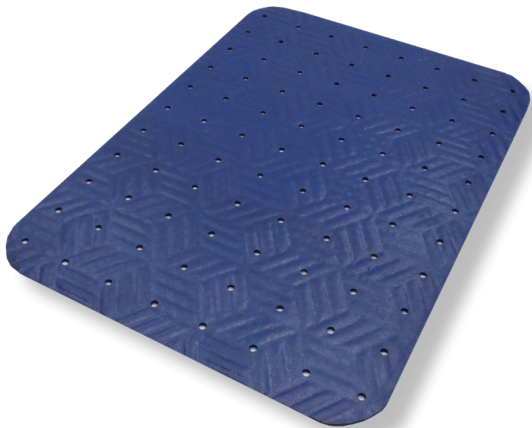


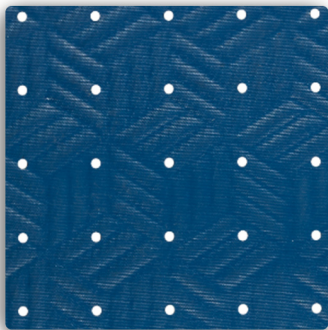
Wet Step[®] Mats

Anti-Fatigue Mats • Wet Area • Indoor/Outdoor

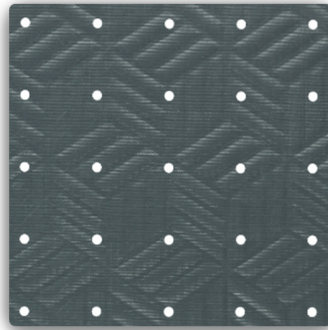
Wet Step mats provide slip resistance and ergonomic benefits in wet areas.



- **Slip-Resistant & Safe** – Drainage holes allow water to freely drain away; certified high traction by the National Floor Safety Institute (NFSI)
- **Comfortable** – 1/4" high-density nitrile foam provides excellent anti-fatigue properties and feels great to bare feet
- **Clean** – Anti-microbially treated to help prevent odors and degradation; mold and mildew resistant; anti-fungal
- **Durable** – Nitrile rubber foam is UV resistant and lasts considerably longer than PVC (vinyl) foam
- **Easy to Clean** – Can be autoclave sterilized, commercially laundered, or washed by hand
- Available in blue or grey



Blue



Grey

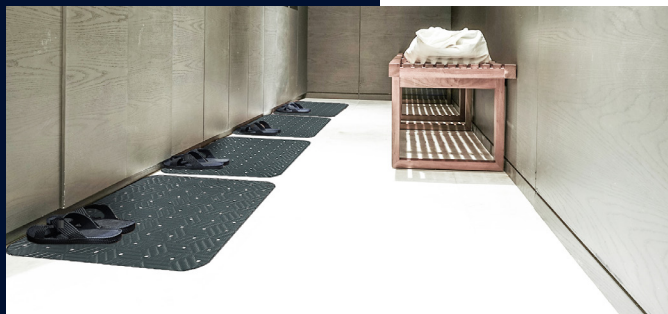
Recommended Uses

Recommended for use in wet areas where additional slip-resistance is needed - locker rooms, showers, and around pools and spas. Also recommended for use in medical settings such as operating rooms and scrub areas.

Colors may vary due to inconsistencies of various display monitors or printers (if you're viewing a printed version of this document). Color images are intended to be used as a guide only.

Wet Step® Mats

Anti-Fatigue Mats • Wet Area • Indoor/Outdoor



Product No. 789

Size (ft.)	Size (in.)	Shipping Weight
17" x 24"	17" x 24"	3 lbs.
2' x 3'	24" x 35"	6 lbs.
3' x 5'	35" x 60"	13 lbs.
3' x 10'	35" x 120"	26 lbs.
3' x 20'	35" x 240"	48 lbs.

Note: Custom sizes are available in 3' (35") widths and whole foot lengths up to 20'.

Mat sizes are approximate as rubber shrinks and expands in conjunction with temperature and time. Tolerable manufacturing size variance is 3-5%.